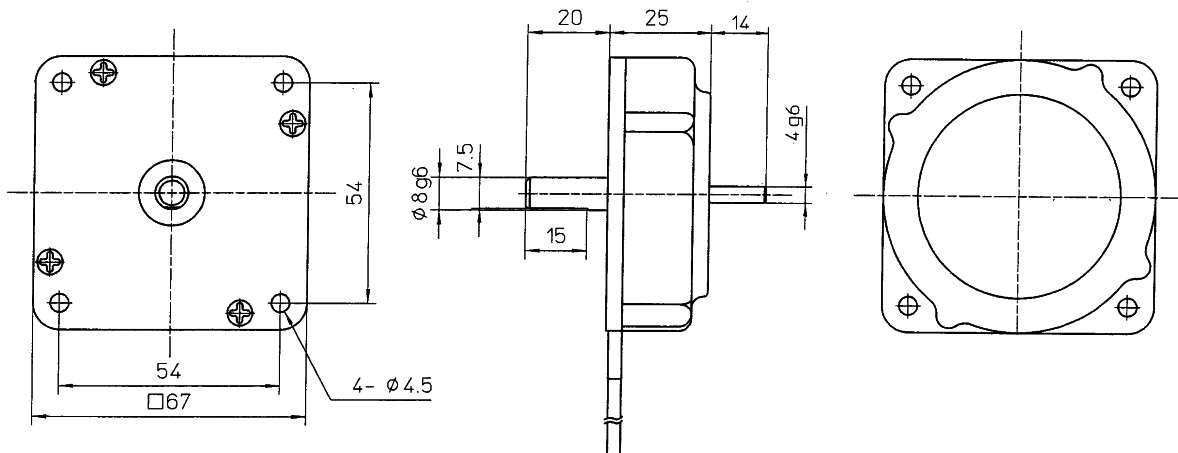


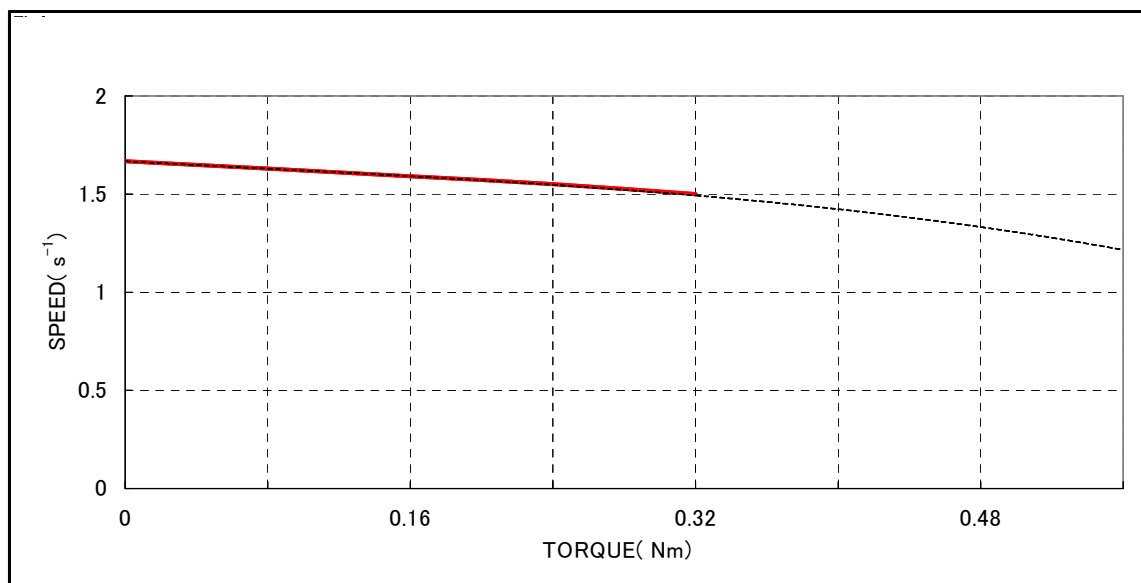
DIMENSIONS



SPECIFICATION

MOTOR	RATED TORQUE (Nm)	0.314
	RATED SPEED (s^{-1})	min. 1.5
	RATED OUTPUT (W)	min. 3.0
	HOLDING TORQUE (Nm)	min. 0.314
	WEIGHT (g)	240
	ENCORDER RESOLUTION (P/R)	—
DRIVER	INPUT VOLTAGE (V)	DC12±0.5
	INPUT CURRENT (A)	max. 2.5
	WEIGHT (g)	about240
OPERATING TEMPERATURE RANGE		-10~50°C
STORAGE TEMPERATURE RANGE		-20~60°C

CHARACTERISTIC



Φ FUKOKU

Fukoku Co., Ltd.